



SPAI srl - Sistemi Per Ambienti Industriali

EasyCut

Link from Microsoft Excel workbook to cutting optimization system

Release 3

Summary

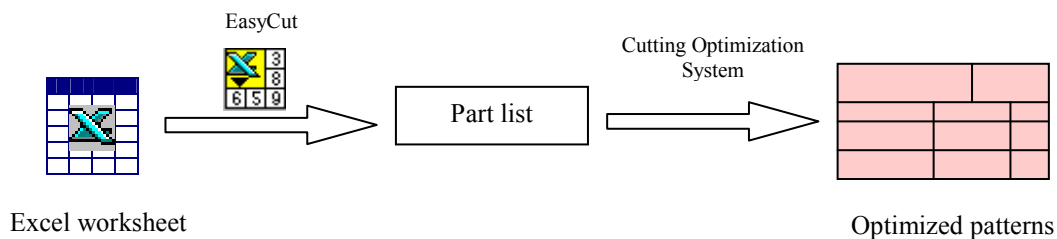
SUMMARY	2
INTRODUCTION	3
Basic information.....	3
The keyboard.....	3
Structure of a window.....	4
Measure unit.....	4
Installation.....	5
Running the software.....	5
THE EASYCUT TOOLBAR.....	6
EXPORT CONFIGURATION.....	7
JOB DATA.....	9
MATERIALS EXPORT	10
EASYCUT MESSAGES	11
Error Messages.....	11
Warnings.....	11
TROUBLESHOOTING.....	12
SYSTEM REQUIREMENTS.....	13

Introduction

Basic information

EasyCut is a software tool developed for Microsoft Excel designed to speed and simplify the use of cutting optimization systems OTTIMO / PERFECT CUT by the users who store their part list data in one or more Excel worksheets.

By a simple click you can export the selected part list and then obtain the cutting patterns quickly and without errors due to data transcription, no matter how you have structured data in your worksheet.



EasyCut is a software utility you can use only with cutting optimization system OTTIMO and PERFECT CUT.

In this tutorial we assume that you are familiar with Windows 95 /98/NT and with Microsoft Excel.

The keyboard

Besides the normal alpha-numerical keys used for introducing data, there are others that operate particular functions:

- <Enter> 1. to confirm in window the relative option
 2. to confirm in input boxes
- <Tab> moves the presently focused object to the next one
- <Shift><Tab> moves the presently focused object to the previous one
- <Arrows> in input boxes move the cursor among the various characters
- <Space> on a selected button it presses it

Structure of a window

Windows are divided into three main parts:

- Title Bar
It can be found at the top of the window and indicates the present function which is active.
- Body
It can be found in the center of the window and contains one or more controls such as input boxes, buttons, etc..
- Tool bar
can be found usually under the title bar and contains buttons to perform the active functions

To select an object in a window, just position the focus on it.

Measure unit

The measure units used are:

Quote (length, width, thickness, etc..)

Millimeters or Dec. inches

Dimensions in millimeters can be entered up to 3 decimal figures.

Installation

Installing the software (floppy disk unit):

Make sure your computer is running Windows 95 or 98.

- 1) Switch off the computer
- 2) Plugs the male connector of hardware key into the parallel port of the computer (printer port)
- 3) Start Up the PC
- 4) Insert the “disk 1” into the drive
- 5) Digit “A:\SETUP.EXE” and then click “OK” from “START/RUN MENU”.

Running the software

After you have installed EasyCut (=> procedure), you should now be ready to run the program by following the instructions below:

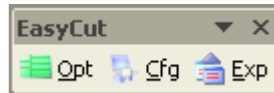
- Double-click on the EasyCut icon on the DESKTOP.
- The Microsoft Excel software will start up with the protected workbook EasyCut.
- Now you can open the worksheets containing the (cutting) panels list to process.
- After you have configured the export you can generate the optimized cutting patterns from the selected rows.

WARNING.

- Plug in the hardware key only with PC power off
- Make sure that XLS files are associated to Microsoft Excel

The EasyCut ToolBar

After you have run EasyCut, besides the toolbars you have chosen for using with Microsoft Excel, will be added the EasyCut ToolBar, who looks like below.



The toolbar contains two buttons:

Opt Button Export selected rows from Excel active workbook, open the *Job data* window and run the Optimizer.

To avoid multiple instances close the optimizer (see related manual) before click this button.

Empty rows, rows with all dimensions equal to zero and rows which quantity is equal to zero in MLC format will not be exported.

Interval of rows and multiple intervals of rows (multiple areas of active workbook) may be selected (please refer to Microsoft Excel user guide).

Cfg Button Open the window *Export configuration*.

Exp Button Export materials of the selected stock into text file.

Export Configuration

This window is displayed after you have click on Cfg button on the EasyCut toolbar.

Configuración Export

Columnas campos optimiz.

Columna código	C
Columna largo	D
Columna anco	F
Columna espesor	G
Columna color	H
Columna cantidad	B
Columna vetas	
Columna sobre prod.	
Columna descripción	A

Unidad de medida

Milímetros

Pulgadas dec.

Utiliza siempre multi-pedido

Vetas

Excedencia máxima: 0

Columnas campos etiquetas

Columna campo 1	D	Columna campo 13		Columna campo 25	
Columna campo 2		Columna campo 14		Columna campo 26	
Columna campo 3		Columna campo 15		Columna campo 27	
Columna campo 4		Columna campo 16		Columna campo 28	
Columna campo 5		Columna campo 17		Columna campo 29	
Columna campo 6		Columna campo 18		Columna campo 30	
Columna campo 7		Columna campo 19		Columna campo 31	
Columna campo 8		Columna campo 20		Columna campo 32	
Columna campo 9		Columna campo 21		Columna campo 33	
Columna campo 10		Columna campo 22		Columna campo 34	
Columna campo 11		Columna campo 23		Columna campo 35	
Columna campo 12		Columna campo 24		Columna campo 36	

Idioma seleccionado: ESPAÑOL

Recorrido optimizador: C:\OTTIMO

Guarda

Anula

OPTIMIZER FILEDS COLUMNS

Enter references to your Excel workbook columns containing data to export to cutting optimization system (refer to related manual for details about data formats).

Code column	(required)	Reference to Excel workbook column containing part code (max 12 chars.)
Length column	(required)	Reference to Excel workbook column containing part length.
Width column	(required)	Reference to Excel workbook column containing part width.
Thickness column	(required)	Reference to Excel workbook column containing part thickness.
Color column	(required)	Reference to Excel workbook column containing part color (max 8 chars.)
Quantity column	(required)	Reference to Excel workbook column containing part required quantity.
Grain column		Reference to Excel workbook column containing part grain.
Overprod. column		Reference to Excel workbook column containing part max. overproduction.
Description column		Reference to Excel workbook column containing part description (max.25 Chars).

LABEL FIELDS COLUMNS

Enter references to your Excel workbook columns containing data for printing part labels (refer to related manual for details about data formats).

Filed “n” column	Reference to Excel workbook column containing data for label field no. “n”
-------------------------	--

OTHER FIELDS

Units	Select your measure unit.
Use only multi-job progr.	If selected the rows are exported and elaborated always using multi-job programming (MLC format). If not selected the export format is chosen depending if part list is homogeneous or not (all parts have the same color and the same thickness). For use the MLC format you must have installed this option in your computer (Top version of optimizer required).
Grain	If “Grain column” field is empty this option is used for grain of part list.
Maximum overprod.	If “Overprod. Column” is empty this field is used as maximum overproduction for each part of the exported list.
Selected language	Language used for messages and labels.
Optim. Installation path	Path of installed cutting optimization system.

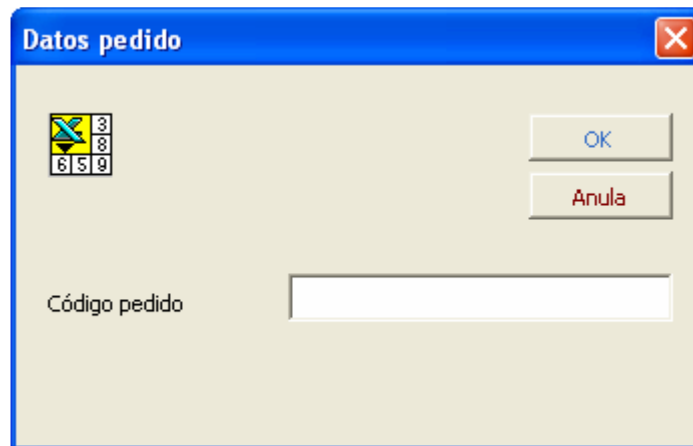
BUTTONS

Either buttons close the configuration window

Save	Save the current configuration with changes.
Cancel	Close the configuration window without saving changes.

Job data

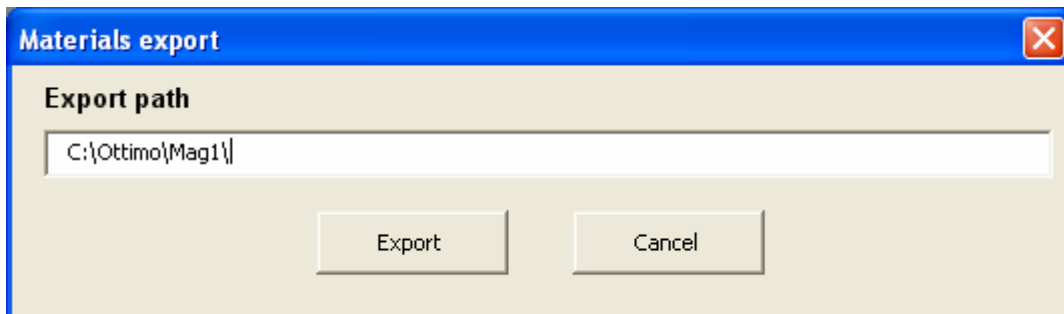
This window is displayed after you have click on Opt button on the EasyCut toolbar.



- Job code** (not required)
Enter the code to assign to the exported job (max 8 chars.)
If you leave this field empty the optimizer runs without enter in programming mode.
- Job description** (not required)
Enter the code to assign to the exported job (max 25 chars.)
This field is visible only if MLC (multi-job) programming mode have been used.
- OK** button Run the optimizer in programming mode with simple job or multi-job programming, depending on the part list and on the configuration you have chosen.
- Cancel** button Run the optimizer skipping job data (the optimizer main window is displayed).

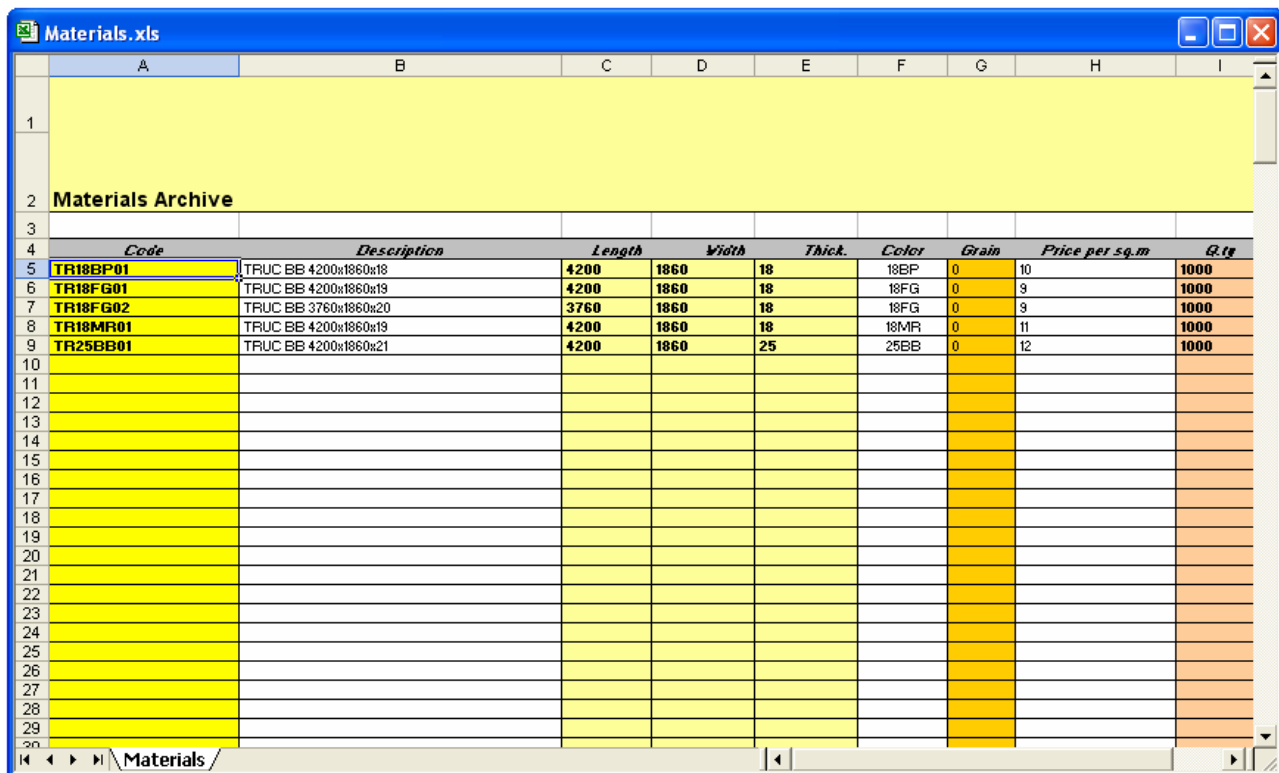
Materials Export

This page is displayed after having pressed the button Exp in the EasyCut toolbar.



Field **Export path** Indicates the destination path for saving the materials.

Given an excel sheet with fixed column position, see layout:



Code	Description	Length	Width	Thick.	Color	Grain	Price per sq.m	G.tg
TR18BP01	TRUC BB 4200x1860x18	4200	1860	18	18BP	0	10	1000
TR18FG01	TRUC BB 4200x1860x19	4200	1860	18	18FG	0	9	1000
TR18FG02	TRUC BB 3760x1860x20	3760	1860	18	18FG	0	9	1000
TR18MR01	TRUC BB 4200x1860x19	4200	1860	18	18MR	0	11	1000
TR25BB01	TRUC BB 4200x1860x21	4200	1860	25	25BB	0	12	1000

C:\EasyCut\Data\Materials.xls

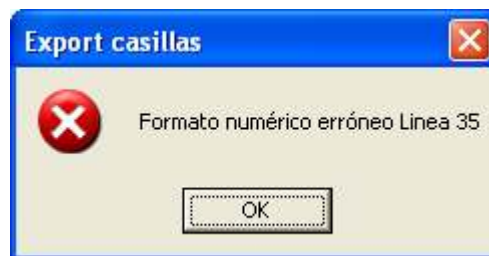
Press the *Export* button to save all the information in text format regarding:

- every selected material, in the case that one or more rows have been selected;
- all the materials in the table if nothing has been selected

EasyCut messages

There are two kind of messages displayed by EasyCut: Error messages and Warning messages.

Error Messages



These messages are displayed when a critical error is detected, after you have click on OK button the operation is stopped.

Warnings



These messages are displayed when a non critical error is detected, you can chose to continue the operation or not

Troubleshooting

A MESSAGE LIKE “UNABLE TO OPEN FILE” IS DISPLAYED.

Be sure that the field “Default Path” of Microsoft Excel Option be empty.

THE MESSAGE “OPTIM. FIELDS COLUMNS REFERENCES WRONG OR INCOMPLETE” IS DISPLAYED AFTER YOU CLICK THE “SAVE“ BUTTON OF “EXPORT CONFIGURATION” WINDOW.

Be sure that required Optimizer fields columns contain data and that data are correct references to Excel workbook columns.

A MESSAGE LIKE “UNABLE TO OPEN FILE” IS DISPLAYED AFTER YOU CLICK THE “OPT“ BUTTON OF EASYCUT TOOLBAR.

Be sure that field “Optim. installation path” you have entered on *Export configuration* is correct.

THE MESSAGE “NO CELL SELECTED” IS DISPLAYED AFTER YOU CLICK THE “OPT“ BUTTON OF EASYCUT TOOLBAR.

Select one or more rows to export from your active Excel workbook (refer to Microsoft Excel user guide).

THE MESSAGE “WRONG NUMERIC FORMAT ROW ..” IS DISPLAYED AFTER YOU CLICK THE “OPT“ BUTTON OF EASYCUT TOOLBAR.

Be sure that references to workbook columns and that numeric fields are correct.

System requirements

Hardware:

- PC 486 DX o higher (Pentium 166 MHz with 32 MB Ram recommended).
- SVGA monitor.
- Hardware key.
- Mouse.

Software:

- Windows 2000
- Microsoft Office 2000, XP, 2003
- Ottimo or Perfect Cut